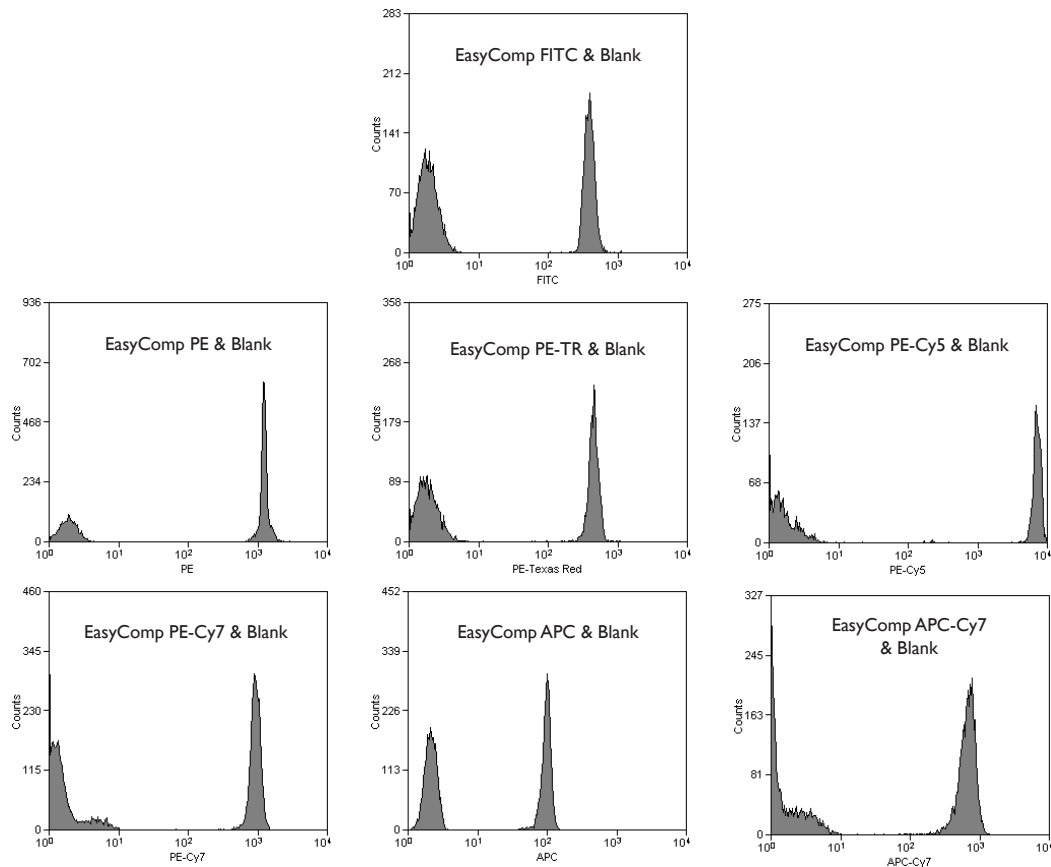


SPHERO™ EasyComp Fluorescent Particles

- Prepared by labeling the surface of polystyrene particles with commonly used fluorophores
- Provide spectral matching particles for setting compensation in a wide variety of channels for any flow cytometer
- Supplied as individual products or as kits for different flow cytometer models.

The EasyComp Fluorescent Particles are prepared by surface labeling polystyrene particles with commonly used fluorophores. These particles are used for setting compensation in a wide variety of channels for any flow cytometer. The EasyComp Fluorescent Particles are supplied as individual products or as kits for use in different models of flow cytometers. For more information on Spherotech beads for flow cytometry compensation go to www.Spherotech.com/pdetail.htm and select [Flow Cytometry Compensation Particles](#).

Particle Type and Surface	Size, μm	Catalog No.	Unit
EasyComp Blank, $10^7/\text{mL}$	3.0-3.4	ECFP-B	5 mL
EasyComp FITC, $10^7/\text{mL}$	3.0-3.4	ECFP-F1	1 mL
EasyComp PE, $10^7/\text{mL}$	3.0-3.4	ECFP-F2	1 mL
EasyComp PE-TR, $10^7/\text{mL}$	3.0-3.4	ECFP-F3	1 mL
EasyComp PE-Cy5, $10^7/\text{mL}$	3.0-3.4	ECFP-F4	1 mL
EasyComp PE-Cy7, $10^7/\text{mL}$	3.0-3.4	ECFP-F5	1 mL
EasyComp APC, $10^7/\text{mL}$	3.0-3.4	ECFP-F6	1 mL
EasyComp APC-Cy7, $10^7/\text{mL}$	3.0-3.4	ECFP-F7	1 mL
EasyComp PerCP, $10^7/\text{mL}$	3.0-3.4	ECFP-F8	1 mL
EasyComp GFP, $10^7/\text{mL}$	3.0-3.4	ECFP-F9	1 mL
EasyComp Kit, (Blank, FITC, PE & PE-Cy5), 4 vials, $10^7/\text{mL}$	3.0-3.4	ECFP-K1	1x5 mL & 3x1 mL
EasyComp Kit, (Blank, FITC, PE, PE-Cy5 & APC), 5 vials, $10^7/\text{mL}$	3.0-3.4	ECFP-K2	1x5 mL & 4x1 mL
EasyComp Kit, (Blank, FITC, PE, PE-TR & PE-Cy5), 5 vials, $10^7/\text{mL}$	3.0-3.4	ECFP-K3	1x5 mL & 4x1 mL
EasyComp Kit, (Blank, FITC, PE, PE-TR, PE-Cy5, PE-Cy7, APC & APC-Cy7), 8 vials, $10^7/\text{mL}$	3.0-3.4	ECFP-K4	1x5 mL & 7x1 mL
EasyComp Fluorescent Particle Kit (Blank, FITC, PE, PE-TR, PE-Cy5, APC & APC-Cy7), 7 vials, $10^7/\text{mL}$	3.0-3.4	ECFP-K5	1x5 mL & 6x1 mL

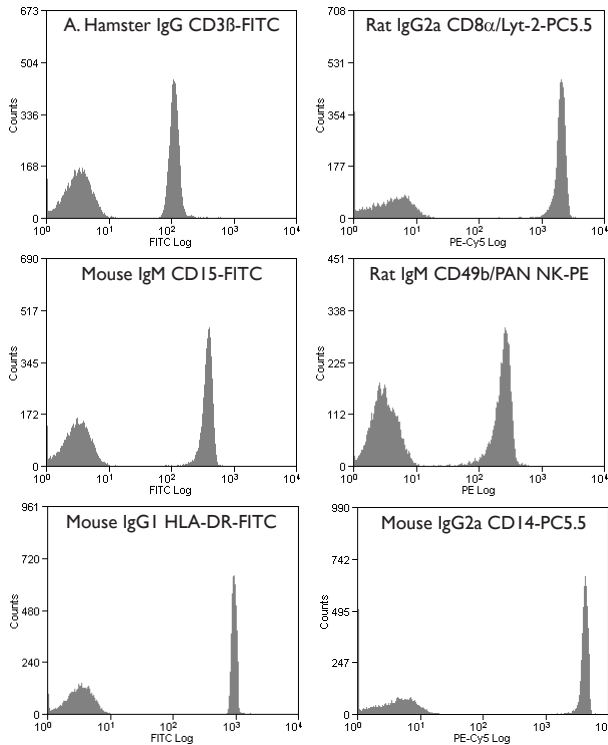


Histograms of the EasyComp Fluorescent Particles with the EasyComp Blank Particles

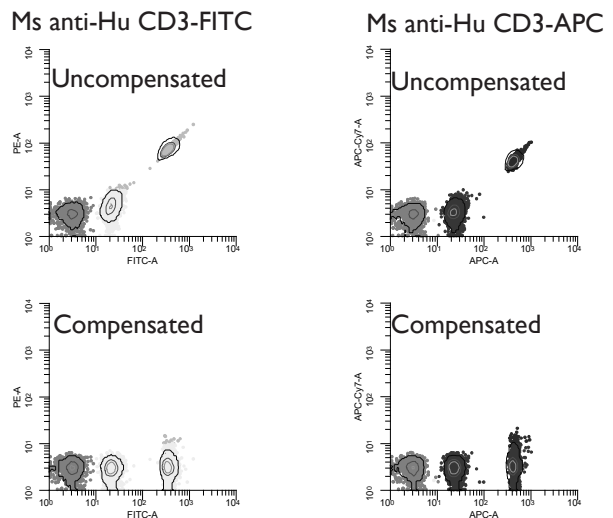
SPHERO™ COMPtrol Antibody Capture Beads

- Binds to antibodies of mouse, rat, and hamster origin, and are immunoglobulin light chain independent
- Provides a method for the quality control of fluorochrome-conjugated antibodies prior to cell staining
- Aids in setting proper compensation to reduce cross-talk between flow cytometer channels
- Compatible with all fluorochromes excited from the UV to the near IR.

Particle Type and Surface	Size, μm	Catalog No.	Unit
COMPtrol Kit, Goat anti-Mouse Ig (H&L) Coated Particles, 2 populations (Negative & High), $1 \times 10^7/\text{mL}$	0.7-0.9	CM1gP-08-2K	2x5mL
COMPtrol Kit, Goat anti-Mouse Ig (H&L) Coated Particles, 2 populations (Negative & High), $1 \times 10^7/\text{mL}$	3.0-3.4	CM1gP-30-2K	2x5mL
COMPtrol Kit, Goat anti-Mouse Ig (H&L) Coated Particles, 2 premixed populations (Negative & High), $1 \times 10^7/\text{mL}$	3.0-3.4	CM1gP-30-5	5mL
COMPtrol Kit, Goat anti-Mouse Ig (H&L) Coated Particles, 3 populations (Negative, Low, & High), $2.5 \times 10^6/\text{mL}$	5.0-5.9	CM1gP-50-3K	3x5mL
COMPtrol Kit, Goat anti-Mouse Ig (H&L) Coated Particles, 3 populations (Negative, Low, & High), $2.5 \times 10^6/\text{mL}$	7.0-7.9	CM1gP-70-3K	3x5mL



Histograms of the CM1gP-30-2K exposed to mouse, rat & hamster antibodies

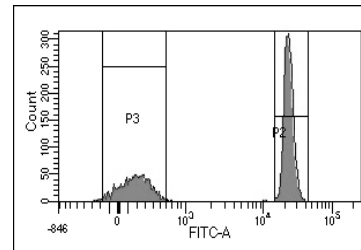


Dot plots of the CM1gP-50-3K exposed to mouse monoclonal fluorescent conjugate

SPHERO™ COMPtrol Amine-Reactive Dye Compensation Kit

Suitable for labeling with LIVE/DEAD® stains or other amine-reactive dyes to generate compensation standards for flow cytometric analysis

Particle Type and Surface	Size, μm	Catalog No.	Unit
COMPtrol Amine-Reactive Dye Compensation Kit, 2 populations (Negative & High), $1 \times 10^7/\text{mL}$	7.0-7.9	CARCP-70-2K	2x5mL



Histogram of the CARCP-70-2K stained with BioLegend Zombie Green™ amine-reactive dye